

Case Study

Aluminum Complex

Grease Use: 40 lbs/day @ \$4.58/lb = \$47,632/year

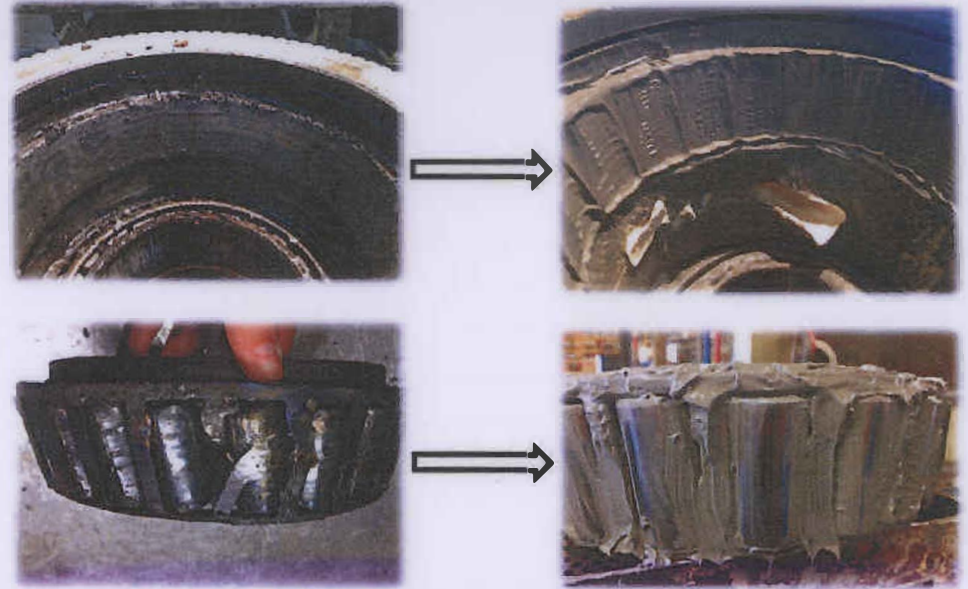
Rebuild Cost: 8/year @ \$13,300 = \$106,400/year

Pro-Roll™

Grease Use: 30 lbs/day @ \$5.91/lb = \$46,098/year

Rebuild Cost: 6/year @ \$13,300 = \$79,800/year

Pro-Roll™ ⇒ \$28,134 Savings/Year!



Aluminum Complex food grade greases are often used due to their upfront cheaper cost. However even the best AL-Complex Grease can't come close to **Pro-Roll** ⇒

Testing Standard		Pro-Roll™	Leading Aluminum Complex	Comments
Thickener Type (Soap)	-	Calcium Sulfonate	Aluminum Complex	-
4-Ball EP Weld/Load (kg)	ASTM D 2596	620	400	50-55% more load carrying capability
Timken OK Load (lbs)	ASTM D 2509	60	40	
Base Oil Viscosity (cSt@212F)	ASTM D 445	19.6	17.9	10% thicker at higher temperatures
Water Washout %	ASTM D 1264	2	7.7	4x less run-out due to steam moisture
Drop Point (°F)	ASTM D 2265	550	500	10% higher max operating temperature

Pro-Roll has the highest overall performance testing results compared to the top 3 competitors also using Calcium Sulfonate thickened food grade greases ⇒

Testing Standard	Pro-Roll™	Competitor 1	Competitor 2	Competitor 3
Thickener Type (Soap)	Calcium Sulfonate	Calcium Sulfonate	Calcium Sulfonate	Calcium Sulfonate
Four-Ball Weld/Load (kgf)	620	620	500	400
Timken OK Load (lb)	60	65	60	NA
Base Oil Viscosity @ 40 °C (cSt)	228	100	225	220
Base Oil Viscosity @ 100 °C (cSt)	19.6	10.8	23	19.5
Viscosity Index	98	90	100	100
Dropping Point (°F)	550	572	572	550
Water Washout @ 175 °F (% wt)	2	2.75	0.42	NA