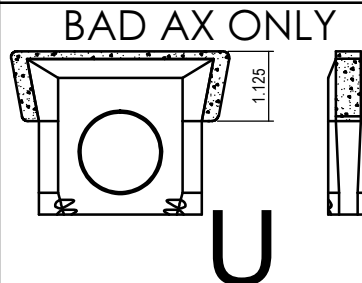
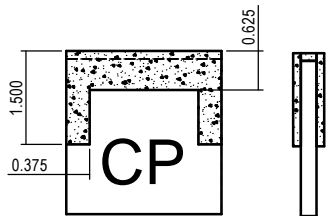
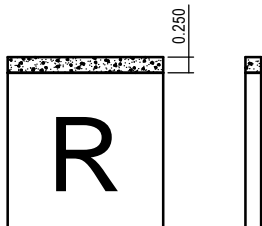
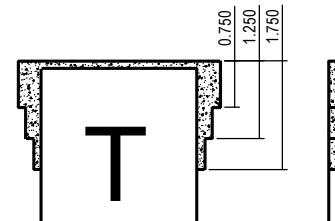
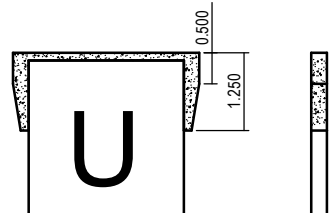
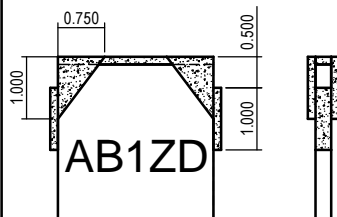
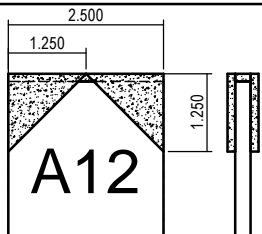
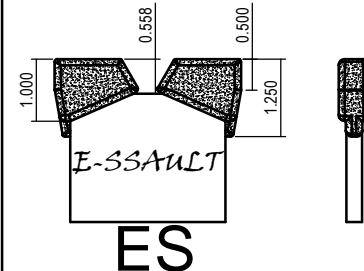
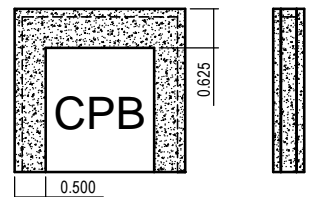
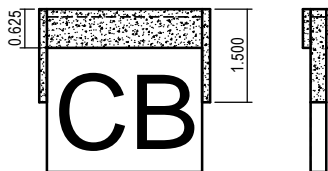
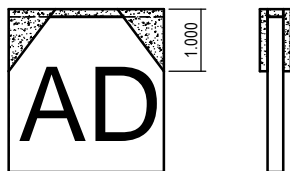
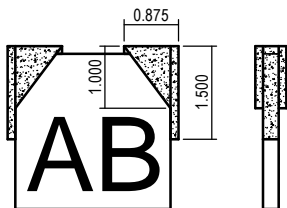
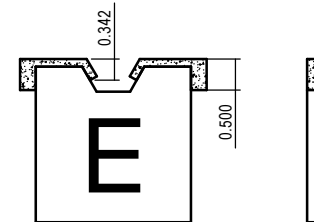
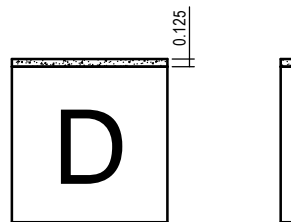
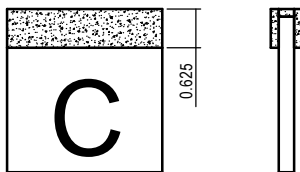
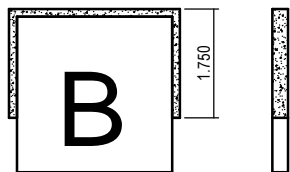
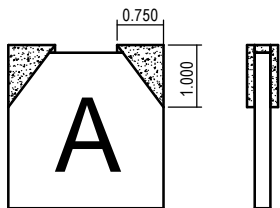


STANDARD HAMMER HARDFACING STYLES REVISION NO. 3



CONFIDENTIAL:
 This Drawing, including the information it bears, is the property of Jacobs Corporation and must be held in strict confidence and properly safeguarded by the recipient at all times. It may not be copied, reproduced, or provided to any other party except with the prior written authorization of Jacobs Corporation and any authorized copy or reproduction must include this legend. The recipient may use the same only for the purpose for which Jacobs Corporation has provided it to the recipient and it must be returned to Jacobs Corporation upon request, along with all copies and reproductions. By accepting this drawing, the recipient agrees to the foregoing.

JACOBS HAMMER HARDFACING STYLES

DATE: 9/15/2014

JACOBS FORM NO. J09F071



HAMMER HARDFACING STYLES

REVISION NO. 3

Revision Table

REV.	DATE	DESCRIPTION	APPROVED	ORDER	DIE
1	08/22/2011	ADDED E1A STYLE	CF	99571	58089
2	02/27/2012	CHANGED STYLE OF E1A TO E-SSAULT AND LABELED ES	CF	3105	59477
3	11/12/2013	ADDED T STYLE HARDFACING	CS	23667	64536
4	9/15/2014	ADDED R, CP, BAD AX ONLY U, BAD AX ONLY CPU	DT	34493	66998
3	10/24/2014	CHANGED BADAX ONLY CPU BY REMOVING THE U AND RENAMING IT Z	D.T.	36055	67440

CONFIDENTIAL:
This drawing, including the information it bears, is the property of Jacobs Corporation and must be held in strict confidence and properly safeguarded by the recipient at all times. It may not be copied, reproduced, or provided or revealed to any other party except with the prior written authorization of Jacobs Corporation and any authorized copy or reproduction must include this legend. The recipient may use this same only for the purpose for which Jacobs Corporation has provided it to the recipient and it must be returned to Jacobs Corporation upon request, along with all copies and reproductions. By accepting this drawing, the recipient agrees to the foregoing.

JACOBS HAMMER HARDFACING STYLES

DATE: Friday, October 24, 2014

JACOBS FORM NO. J09F071

